

Chapter

1

Rev.	Change History	Change Time	Originator
V1.0	First Release	2019/1/17	Susan_Tsai

Service Overview

Carefully read through this chapter for a look at various components of the notebook before performing any service and repairs.

To provide the best service and support for the ASUS FX505DY **series Notebook**, we have provided the below information for technicians from distributors and resellers to perform the complete notebook disassembly and assembly. But before performing the procedures, please be sure to read through the overview in this chapter for component overview to avoid any unwarranted damages to the notebook's hardware.

The following chapter includes:

- [FX505 Overview](#)
- [Components](#)

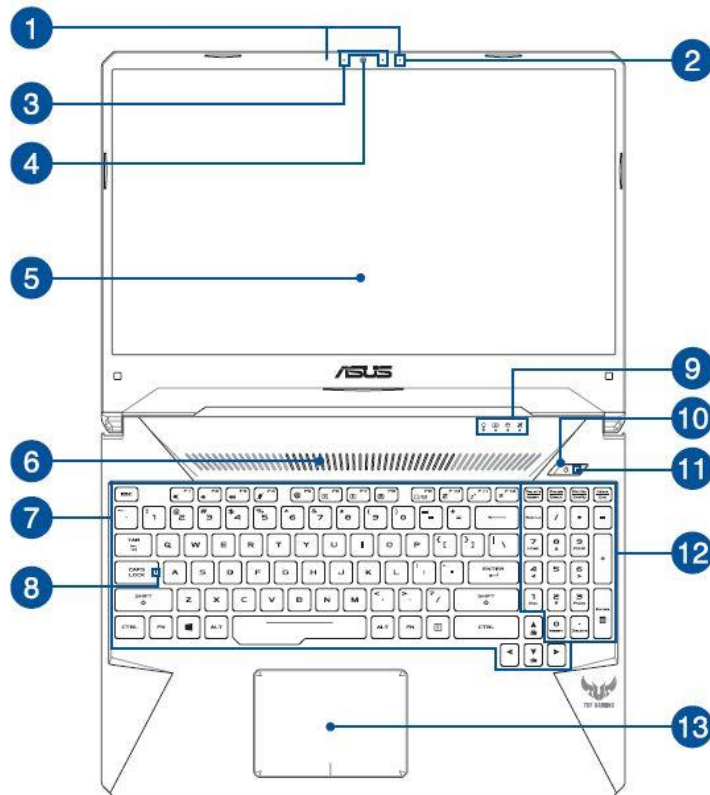
FX505 Overview

In this section, an overview for the FX505 along with its components, will be presented.

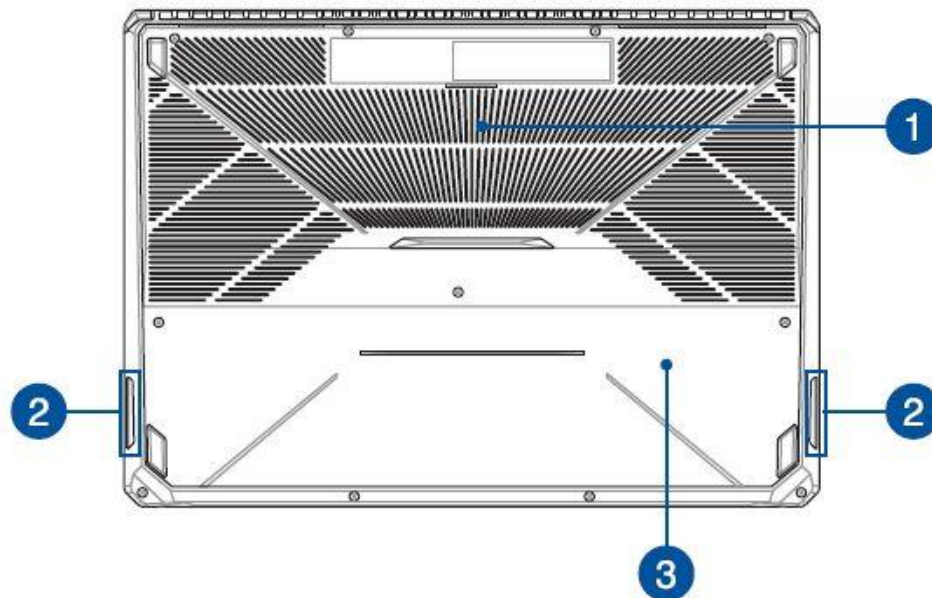
OVERVIEW

FX505 Overview

The illustrations below show the notebook's overview from front view, right side view, and left side view. Most of the parts will be discussed in this manual.

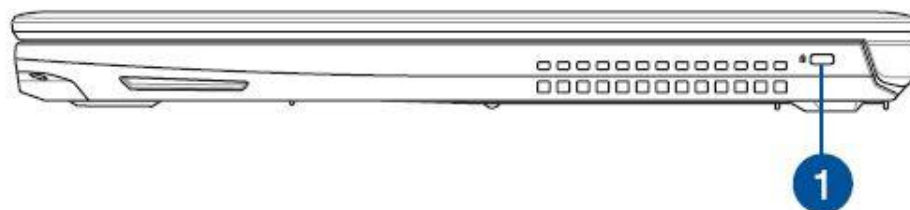


1. Array microphones(on selected models)
2. Microphone
3. Camera indicator
4. Camera
5. Display panel
6. Air vents
7. Keyboard
8. Capital lock indicator
9. Status indicators
10. Power button
11. Power indicator
12. Numeric keypad
13. Touchpad



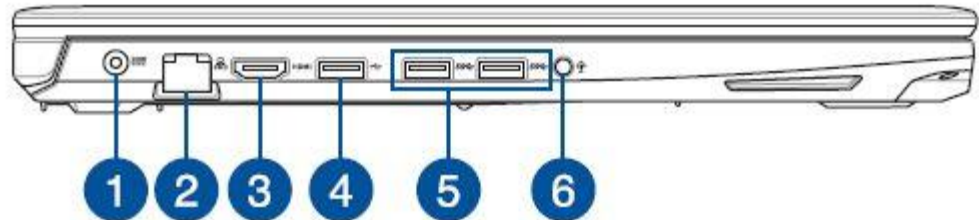
1. Air vents
2. Audio speakers
3. Compartment cover

Right Side



1. Kensington® security slot

Left Side



1. Power (DC) input port
2. LAN port
3. HDMI port
4. USB 2.0 port
5. USB 3.1 Gen 1 port
6. Headphone/Headset/Microphone jack

[BACK](#)

COMPONENTS

Components

The illustrations below show the components of the GL702.

LCD

LCD

The illustration below shows the LCD.



LCD BEZEL

LCD Bezel

The illustration below shows the Touch panel control board.



LCD COVER

LCD Cover

The illustration below shows the LCD cover.



TOP CASE

Top Case

The illustration below shows the top case.(With speaker)



BOTTOM CASE

Bottom Case

The illustration below shows the bottom case.



**TOUCHPAD
MODULE**

Touchpad Module

The illustration below shows the touchpad module.



**THERMAL
MODULE**

Thermal Module

The illustration below shows the thermal module.





HDD

HDD

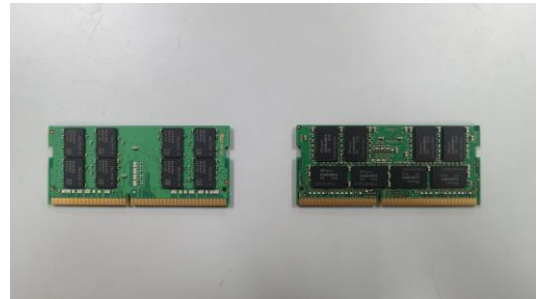
The illustration below shows the HDD.



MEMORY

Memory

The illustration below shows the memory.



MAIN BOARD

Main Board

The illustration below shows the main board.



LED BOARD

LED Board

The illustration below shows the LED board.



WLAN MODULE

WLAN Module

The illustration below shows the WLAN module.



BATTERY

Battery Pack

The illustration below shows the battery pack.



CAMERA

Camera

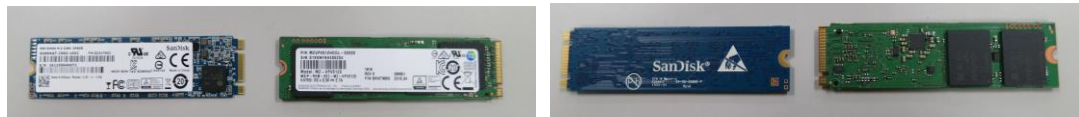
The illustration below shows the camera.



SSD MODULE

SSD Module

The illustration below shows the SSD Module.



TOUCHPAD FFC

Touchpad FFC

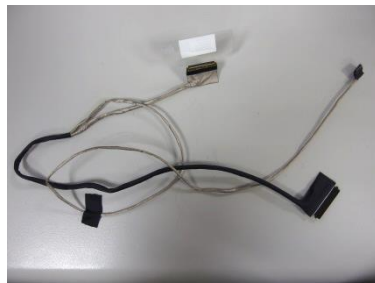
The illustration below shows the Touchpad FFC.



EDP CABLE

EDP Cable

The illustration below shows the EDP Cable.



DC-IN CABLE

DC-In Cable

The illustration below shows the DC-IN Cable.



LED FFC

LED FFC

The illustration below shows the LED FFC.



[BACK](#)

ITEM	Product Line	Model	Part Number	Part Description	Usage Qty Per Unit	Single Part or Combo Part	Occasion to use (Choose 1 of 3)	Key part P N	Key part DESC
1	GAMING NB	FX505DY	13NR0050L72111	FX505GE LCD BEZEL ADHESIVE//SUNYIEH	1	N	1. When replace LCD bezel/cover/panel/Camera/EDP cable. 2. When need to tear off LCD Bezel Adhesive, replace new one after tear off.	90* 90* 18* 04* 14*	*LCD Bezel* *LCD COVER* *LCD pane* *Camera* *EDP CABLE*
2	GAMING NB	FX505DY	13NR0050L88111	FX505GE LCD ADHESIVE IMR L//SUNYIEH	1	N	1. When replace LCD/LCD EDP cable 2. When need to tear off LCD Adhesive, replace new one after tear off.	18* 14*	*LCD pane* *EDP CABLE*
3	GAMING NB	FX505DY	13NR0050L89111	FX505GE LCD ADHESIVE IMR R//SUNYIEH	1	N	1. When replace LCD/LCD EDP cable 2. When need to tear off LCD Adhesive, replace new one after tear off.	18* 14*	*LCD pane* *EDP CABLE*
<p>If you need to replace the key parts on G-column, you also need to get the accessory parts on D-column for repair use. Ex: If you need to replace the T/P module, you also need to get TP203NA-1K TOUCHPAD-MYLAR/TIANLIDA, Qty:1.</p> <p>Because touchpad Mylar is distinguished by ID color, please confirm the machine's ID color before order touchpad Mylar. Ex: 90NB0FK1-T00020 AU TP203N N3550/5AG5/4G/UK/TP203NAH-1KBP/WOC/N/WAC/A00#2 13NB0EQ1L01011 TP203NA-1K TOUCHPAD-MYLAR/TIANLIDA</p> <p>*ALL PARTS* means for all the repair action that need to disassemble th device, you will need to oet the accessory parts on D-column for repair use.</p>									