

Service Overview

Carefully read through this chapter for a look at various components of the notebook before performing any service and repairs.

To provide the best service and support for the ASUS X510 **series Notebook**, we have provided the below information for technicians from distributors and resellers to perform the complete notebook disassembly and assembly. But before performing the procedures, please be sure to read through the overview in this chapter for component overview to avoid any unwarranted damages to the notebook's hardware.

The following chapter includes:

- [X510 Overview](#)
- [Components](#)

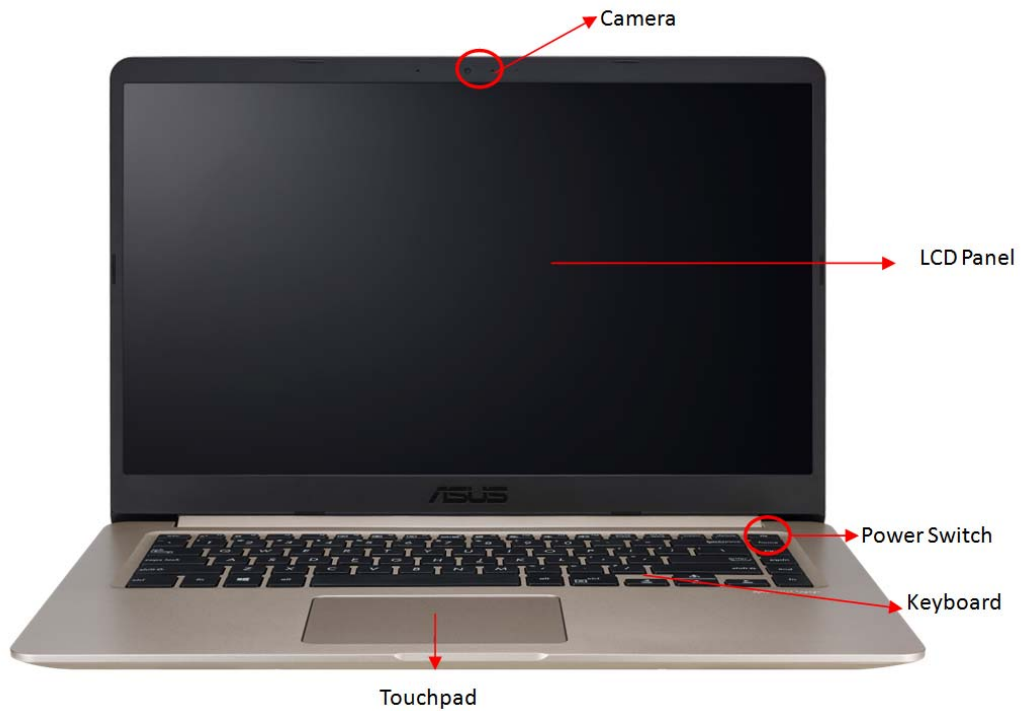
X510 Overview

In this section, an overview for the X510 along with its components, will be presented.

OVERVIEW

X510 Overview

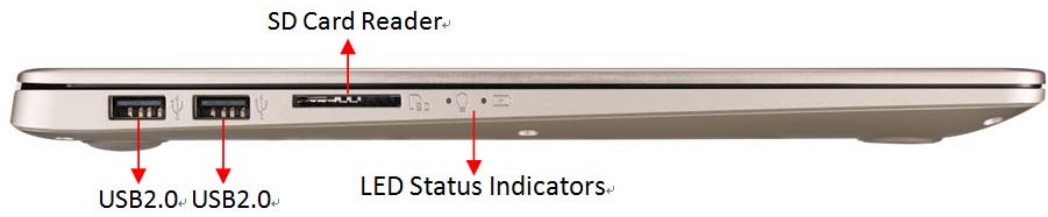
The illustrations below show the notebook's overview from front view, right side view, and left side view. Most of the parts will be discussed in this manual.



Right View



Left View



[BACK](#)

COMPONENTS

Components

The illustrations below show the components of the X510.

LCD

LCD

The illustration below shows the LCD.



LCD BEZEL

LCD Bezel

The illustration below shows the Touch panel control board.



LCD COVER

LCD Cover

The illustration below shows the LCD cover.



TOP CASE

Top Case

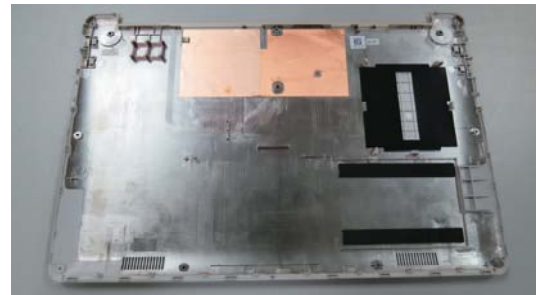
The illustration below shows the top case.



BOTTOM CASE

Bottom Case

The illustration below shows the bottom case.



THERMAL
MODULE

Thermal Module

The illustration below shows the thermal module.



H D D

HDD

The illustration below shows the HDD.



M E M O R Y

Memory

The illustration below shows the memory.



M A I N B O A R D

Main Board

The illustration below shows the main board.



W L A N
M O D U L E

WLAN Module

The illustration below shows the WLAN module.



BATTERY

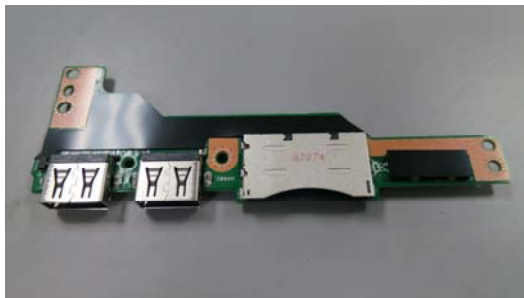
Battery Pack

The illustration below shows the battery pack.



IO BOARD

IO Board



TOUCHPAD

Touchpad

The illustration below shows the touchpad.



CAMERA

Camera

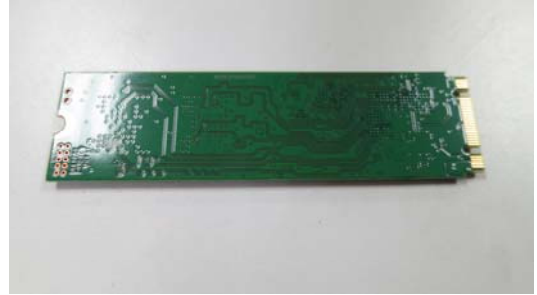
The illustration below shows the camera.



SSD MODULE

SSD Module

The illustration below shows the Sensor board.



SPEAKER

Speaker

The illustration below shows the speaker.



HDD BOARD

HDD BOARD

The illustration below shows the ODD.



[BACK](#)